



THANK YOU TO TODAY'S SPONSORS

GOLD SPONSORS



BREAKFAST SPONSORS



GIFT SPONSOR



LUNCH SPONSORS



RECEPTION SPONSORS



yes and

expert advisors



advocates who go
the extra mile



m3ins.com — 800.272.2443



NAVIGATING YOUR COMPANY'S FUTURE.

No one knows what tomorrow will bring. But when you partner with Associated Bank for all your commercial banking needs, we help you navigate your business with tomorrow in mind.

AssociatedBank.com/Commercial

WHERE LENDING MEETS LONG-TERM PARTNERSHIPS

*Flexible financing tailored to your business goals—
backed by people who understand your industry.*



At Bank First, we believe business banking should be personal, proactive, and built on trust. Our lending solutions go far beyond traditional financing. Whether you're expanding operations, investing in equipment, managing cash flow, or acquiring a new facility, our experienced team is here to guide you every step of the way.



Let's move your business
forward—connect with a
Commercial Lender today.



www.bankfirst.com

MEMBER FDIC | EQUAL HOUSING LENDER

THE POWER OF A TRUE PARTNER

To keep running in a fast-paced world, industrial and manufacturing facilities need contractors to deliver like never before. Leaner. Smarter. More efficiently. Buildings that don't just compete – but outperform.

BOLDT®



See what we can do
for you at boldt.com

*Proud sponsor of
the NEWMA President's Cup
Scholarship Golf Outing*



J.P.Morgan | CHASE 

Tailored guidance to drive
informed decisions

JPMorgan Chase is proud to support the NEW Manufacturing Alliance's 8th Annual President's Cup Scholarship Golf Scramble.

With a presence in more than 125 U.S. markets and a network around the world, we can provide local industry knowledge and global expertise.

Our middle market bankers and specialists have deep knowledge across a range of industries and can deliver access to all of the financial services J.P. Morgan provides. From manufacturing and media to consumer and retail and everything in between, our solutions and services are designed to help businesses of all types manage their finances and grow.

To learn more about Chase Commercial Banking, contact:

Allyn Emery

Commercial Banker, Middle Market Banking

allyn.emery@chase.com | 920.215.7773

© 2025 Chase, J.P. Morgan, JPMorgan Chase, and Story by J.P.Morgan are marketing names for certain businesses of JPMorgan Chase & Co. and its affiliates and subsidiaries worldwide (collectively, "JPMC", "We", "Our" or "Us", as the context may require).

NUMBERS. PEOPLE.

It takes balance.TM



We'll get you there.

CPAs | CONSULTANTS | WEALTH ADVISORS

920-731-8111

CLAAconnect.com

©2025 CliftonLarsonAllen LLP. CLA (CliftonLarsonAllen LLP) is an independent network member of CLA Global. See CLAGlobal.com/disclaimer. Investment advisory services are offered through CliftonLarsonAllen Wealth Advisors, LLC, an SEC-registered investment advisor.



Prepare
to be
**blown
away**

Preparation.

Like teeing up a great shot, thoughtful preparation can mean the difference between a good building project and a great one. Our pre-construction team sets up every project for success, guaranteeing a flawless construction execution - and an exceptional experience for you.



920.739.3555 | 1call2build.com

Thank you NEWMA for preparing our next generation of manufacturing leaders

When other banks stumble, we shine. Built for businesses and individuals with sophisticated needs, we outperform banks designed for the masses. Complex financial challenges? We've got you covered.

Better Banking For Business.

Ready when you are.

firstbusiness.bank
Member FDIC



Family values. Community commitment.

WE'RE MORE THAN JUST ADVISORS, WE'RE YOUR NEIGHBORS.

As an independent, privately held company for 55 years, we care passionately about helping our communities thrive. From our family to yours, thank you for the opportunity to support the Northeast Wisconsin Manufacturing Alliance President's Cup Scholarship Golf Scramble.



Talk to our commercial banking team to get started today.

JohnsonFinancialGroup.com

Products and services offered by these Johnson Financial Group companies: Johnson Bank and Johnson Wealth Inc.



54+ YEARS IN BUSINESS

Family-Focused Company With a Unified Vision!

We offer a wide range of high quality custom blow molded products & wood alternative lumber.



N.E.W. Plastics Corp. - Main Office: 112 4th Street, Luxemburg, WI 54217
(920) 845-2326 | newplastics.com | renewplastics.com

WE ARE HIRING

*STARTING AT \$16/HR +
SHIFT PREMIUM*

APPLY ONLINE OR IN PERSON
renewplastics.com/careers

Nicolet NATIONAL BANK

Real People. Real Conversations.

NicoletBank.com | 800.369.0226

MEMBER FDIC



HERE TO ELEVATE NORTHEAST WISCONSIN

More than a college – NWTC is a launchpad.

Our graduates soar in their careers, drive innovation, and shape stronger communities.

Since 1912, NWTC has partnered with business and industry to produce highly skilled graduates who go to work right here in Northeast Wisconsin.

Together with our partners, we elevate the lives of our graduates, their families, and our communities.

Let's continue soaring higher together.

NWTC.EDU



Every big win is
built on a
thousand small
victories.



We're proud to support the NEWMA President's Cup Scholarship Golf Outing. And proud of the strides they make every day.

Contact Joe Vehec
Relationship Manager
414-270-5691
Joseph.Vehec@pnc.com
pnc.com



MANUFACTURE YOUR CUSTOM PROJECTS WITH CONFIDENCE.

UNPARALLELED MACHINING FOR YOUR UNIQUE INDUSTRY



- 24/7 Customer Service
- CNC Machining
- Rapid Prototyping
- Robotic Machining
- 5 Axis Machining
- Custom Inventory Programs
- Small & Large Production
- Assembly

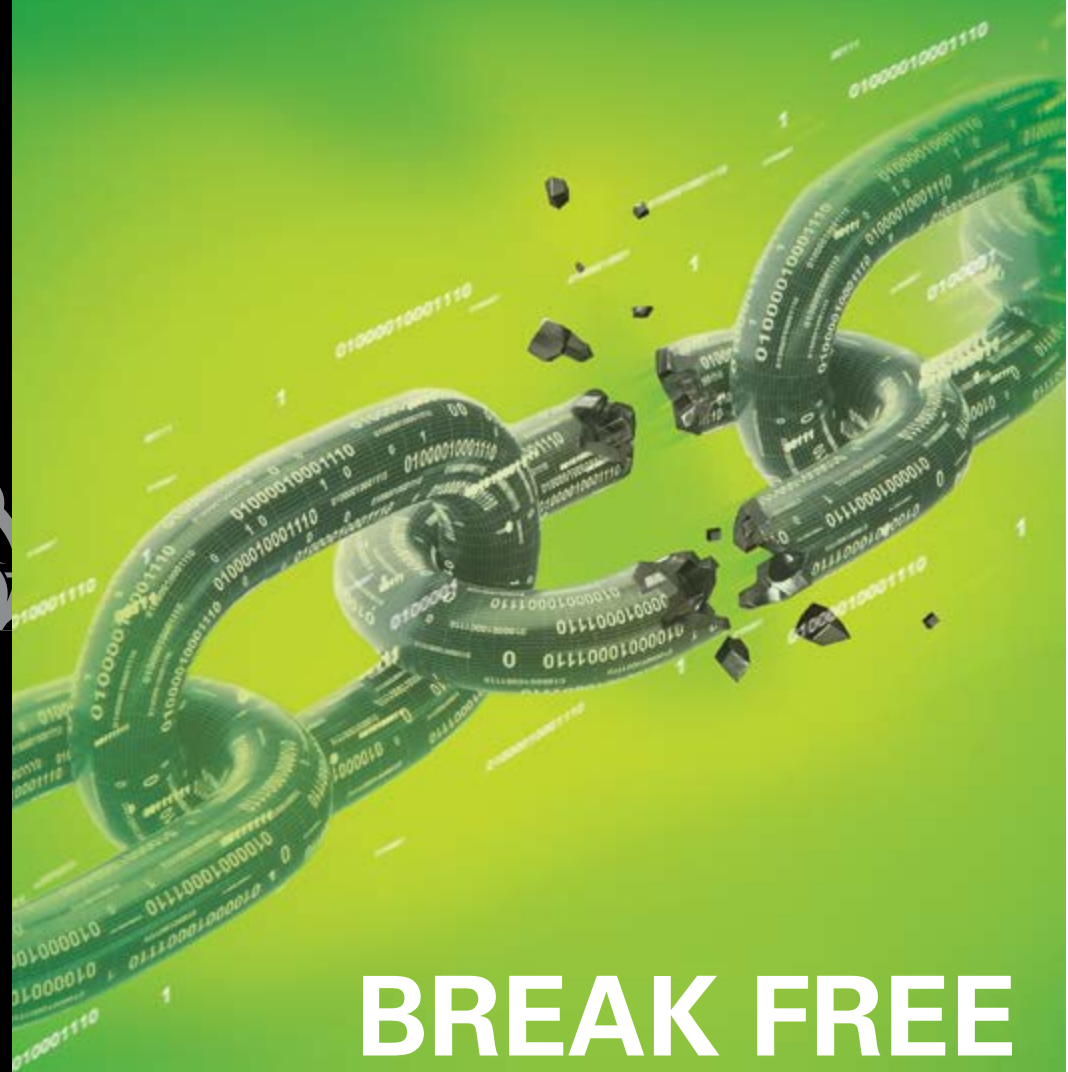
CONTACT US TODAY

<https://builtbyprecision.com>

920-487-5950



PROUD SPONSOR OF THE
NEW MANUFACTURING ALLIANCE
PRESIDENT'S CUP SCHOLARSHIP
GOLF SCRAMBLE



BREAK FREE FROM DATA LIABILITY!

Sadoff will **destroy** your data
and **assume** the liability.

SE SADOFF E-RECYCLING
& DATA DESTRUCTION
A SADOFF IRON & METAL COMPANY

SadoffEcycle.com



INNOVATION & DESIGN

Smet Construction Services – Construction Manager

- Design / Build
- Lease or lease-to-own options
- Full Transparency Contract Options –
Know how every dollar is spent
- Hire local subs impacting the local economy
- Assistance with funding



smet.com | 920-532-3828



When you are ready to turn your passion into a profession, join other resilient problem solvers and fearless dreamers at the Richard J. Resch School of Engineering at UW-Green Bay.

Work side-by-side with dedicated, award-winning professors in our state-of-the-art facilities within the STEM Innovation Center on the Green Bay campus.

**We offer
Bachelor Degrees in:**

**Mechanical Engineering
Mechanical Engineering Technology
Electrical Engineering
Electrical Engineering Technology
Environmental Engineering Technology**



**RICHARD J. RESCH
SCHOOL of ENGINEERING**

UNIVERSITY of WISCONSIN - GREEN BAY

Explore your future at
uwgb.edu/admissions
or call **920-465-2111**
for more information.

For a tour of our Engineering labs contact:

Matt Kelliher
kelliherm@uwgb.edu | 920-465-5025

John Katers
katersj@uwgb.edu | 920-465-2278

GOOD LUCK GOLFERS!

SET THEM UP FOR SUCCESS.

Werner proudly supports NEW Manufacturing Alliance's drive to help students pursue careers in manufacturing.



WernerElectric.com

WE'RE NOT SPECTATORS. WE'RE ON YOUR TEAM!

We're Wisconsin's Bank for Business®. When you partner with us, you gain access to a team that knows your business and community as well as you do. When you're ready to experience a better way to bank, our local experts are here to help.

CUSTOMIZED SOLUTIONS FOR YOUR BUSINESS

- Commercial Lending
- SBA Lending
- Working Capital
- Treasury Management¹
- Equipment Leasing
- And More



JULIAN LAMUE

Market President, Northeast Wisconsin
jlamue@wintrust.com | 920-819-6697



GLENN MARGRAFF

Group Executive Vice President
gmargraff@wintrust.com | 414-255-1002



BRENT HAMM

Division Manager
bhamm@wintrust.com | 414-255-1038

DIFFERENT APPROACH, BETTER RESULTS®

WINTRUST
COMMERCIAL BANKING
AT TOWN BANK, N.A.

200 E. Washington St. | Appleton, WI 54911
townbank.us/truepartners



SCAN to
discover the
Town Bank
difference.

1. Treasury Management Services. See your banker or Treasury Management Services Sales Officer. Additional fees may apply.



Drill down to level up.

Our insights allow you to increase efficiency and push production to another level. Visit wipfli.com/manufacturing.

ADVISORY & ACCOUNTING

WIPFLI

FROM POWER TO PRECISION PIEPER DELIVERS IT ALL

POWER. CONTROL. PERFORMANCE.

When the stakes are high and the systems are complex, manufacturers trust Pieper to deliver end-to-end solutions—from industrial electrical services to advanced automation.

Whether you're scaling operations or transforming production, we bring the team, tech, and trust to make it happen—safely, seamlessly, and smartly.

- ⇒ Custom Robotics & Vision Systems
- ⇒ Control Panel Build
- ⇒ Electrical Installation & Support
- ⇒ 24/7 Service by Industry Experts

One company. Infinite capability.
That's the Pieper advantage.



Pieper Electric + Pieper Automation
Engineered for what's next.

**Let's build your
future-proof facility.**
www.pieperpower.com



A Life of Climb

Mary Hosmer
Vistage Chair
920.585.3620
Mary.Hosmer@vistagechair.com
www.vistage.com

Improving the effectiveness and enhancing the lives of CEOs, business owners and key executives of small and medium-sized businesses.

VISTAGE

Making A Difference

For Our Team Members, Customers, and Community



Appleton

395 Stroebe Road
Appleton, WI 54913
(920) 739-7096



Oshkosh

3465 Moser Street
Oshkosh, WI 54901
(920) 657-1800




Laminations

3010 E. Venture Drive
Appleton, WI 54911
(920) 831-0596

Fore-get pain. Play on.

*Schedule an appointment today
and get back to your best game.*

 920-288-5555

 @baycareorthogb



BAYCARE
ORTHOPEDICS &
SPORTS MEDICINE



MOLDING THE FUTURE ONE INNOVATION AT A TIME.

Wisconsin Aluminum Foundry
manufactures success through
innovation and investment, finding
solutions for even the most
challenging casting applications.

WAF

CELEBRATING 115 YEARS

wafco.com
920.682.8286
inquiries@wafco.com
838 S. 16th Street, Manitowoc, WI 54220

MARION®

MARIONBODY.COM • 715-754-5261

THERE'S "QUALITY" AND THERE'S MARION QUALITY



COMMERCIAL TRUCKS • FIRE & EMERGENCY APPARATUS • CUSTOM CABS • SPECIALTY VEHICLE BODIES

Superior Cheese Processing and Packaging Solutions

Since 1975, HART Design & Manufacturing has led the industry in crafting superior cheese processing and packaging equipment. With over 40,000 square feet of production facilities in Green Bay, we offer comprehensive services from design to assembly all under one roof. We pride ourselves on listening closely to our clients to deliver custom solutions that meet their specific needs, no matter how complex. At HART, we thrive on turning challenges into success stories.



We're Hiring!
Visit HartDesign.com

HART

1940 Radisson St., Green Bay, WI 54302 | (920) 468-5927 | HartDesign.com | Store.HartDesign.com



THE RESULTS YOU NEED ALL UNDER ONE ROOF

- Precision Machining
- CAD / CAM
- EDM
- Fixtures
- Tool and Die
- Production Stamping
- Jig Grinding
- Waterjet Cutting

**FOX VALLEY
TOOL & DIE**

CONTACT US TODAY!

920.766.9455 | fvtd@fvtd.com | [f](#) [i](#) [in](#)



PERFORMANCE

PALLET - TRANSPORTATION - FIREWOOD
820-833-7839 - SEYMOUR, WI

Quality That Pays for Itself

CAPABILITIES
& SERVICES



920-833-7839



Full-Service Provider

Full-service packaging: we build wood packaging, deliver to customers, and return with their unwanted recyclable materials.



New & Recycled Pallets

From specialty pallets, crates, skids, to total pallet solutions, we have wood packaging products and services to meet your needs



Comprehensive Recycling Services

We also haul away your recyclable materials, including stretch film, wooden boxes, and more, keeping your facility clean and compliant.

WWW.PERFCORP.COM

HEADQUARTERS

112 N MAINLINE DRIVE, SEYMOUR, WI 54165

**FOX VALLEY
WOOD PRODUCTS**

- People First
- Product Quality
- Professionalism



• Pallets • Lumber • Custom Crates

www.FoxValleyWoodProducts.com

KAUKAUNA, WI • 920.766.4069

Thank you to the featured Presidents, CEOs & VPs who participated in today's event:

| | |
|---|--|
| Kurt Voss, Amerilux International | Mark Kaiser, Lindquist Machine Corp (LMC) |
| Tim Riebau, VPI, Inc. | Aaron Janichuk, CMD Corp. |
| Kim Bassett, Bassett Mechanical | Louie Gentine, Sargento Foods, Inc. |
| Todd Louthain, Coex 3D | Dave McIlheran, Cherry Optical Lab |
| Nate Andres, ATCAM LLC | Nick Murray, Redline Plastics |
| Chris Fuss, Titletown Manufacturing | Kevin Marrick, ZETA Group Engineering, LLC |
| Paul Konopa, NEW Hydraulics, Inc. | Jeff Hebbard, TIDI Products, LLC |
| Rick Recktenwald, Walker Forge, Inc. | Ann Franz, NEW Manufacturing Alliance |
| Terry Brei, Sure Controls, Inc. | Matt Szymanski, VP, Green Bay Packaging, Inc. |
| Brandon Beard, DuxxBak Composite Decking | Brian Tatzlaff, Fox Valley Tool & Die |
| John Dennis, Gardan Manufacturing Services | John Nundahl, Georgia Pacific |
| Brian Mannering, LaForce | Scott Bean, BW Converting |
| Paul Adamski, Velocity Machine | Amy Bertram, CEO Fiberglass Solutions, LLC |
| Tad Campana, Services Plus, Inc. | Jordan Schroeder, Scott's Industrial Coatings |
| Rob Crossman, Voith | Jeff Berg, VP of Operations, Voith |
| Paul Rauscher, Machines Plus | Brian Conrad, Great Northern Corp. |
| Jeff Frank, Fincantieri Bayshipbuilding | Craig Wiedemeier, Werner Electric Supply |
| Jeff Pallini, Fosber America, Inc. | Pete Augustine, Johnston Bakery |
| Joe Terrien, ITAD Logic | Brian Geurts, EMT International |
| Lynie Vincent, N.E.W. Plastics Corp. | TBD - N.E.W. Plastics |
| Mike Rader, Kadant GranTek | James Williams, U.S. Lubricants |
| Bob Schulz, Pierce Manufacturing | Jamie Spitzer, Precision Machine, Inc. |

Print Sponsor

